

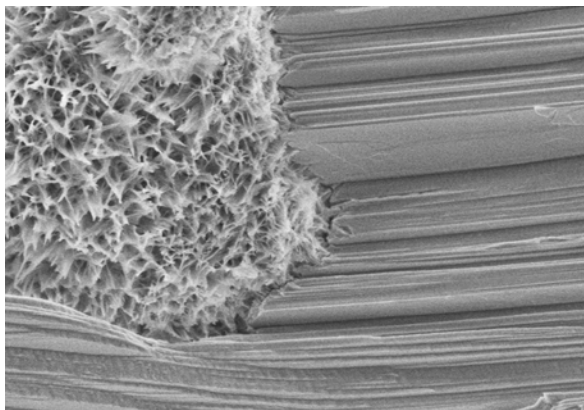
# ROCKMAX<sup>®</sup> HSC

## WATER BASED CRYSTALLIZATION WATERPROOF



### INTRODUCTION

**Rockmax HSC** is a water based, chemical reaction, concrete and cement paste penetration to form a crystal matrix gel in pores, crack, void and capillaries below concrete surface. The solutions provide permanent concrete waterproof and increase concrete durability. The crystal matrix create a protection of cement paste from salt water, high contaminants water, sewage, waste water and some chemicals. **Rockmax HSC** will seal dead crack and hairline crack on concrete and remain active when contact with water.



### AREA OF USES

**Rockmax HSC** can apply to all concrete structure which contact with water, salt water, waste water area including:

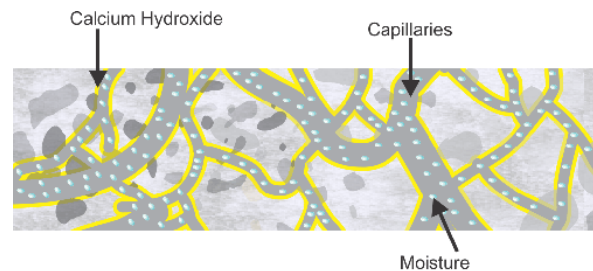
- Water tank.
- Waste water tank.
- Roof decks.
- Car parks.
- Highway and Bridge decks.
- Marine structures.
- Runway and Taxiway.
- Precast concrete.
- Concrete slab, deck, podiums
- Concrete foundations and Pylons.

### ADVANTAGES

- Protect concrete structure from carbonation and chloride attack.
- Protect rebar from corrosion.
- Penetrate to concrete surface (up to 40-50mm depends on porosity).
- Fill porous and capillaries in concrete.
- Permanent waterproof.
- Increase durability of concrete.
- Re-active and life time seal.
- Vehicle trafficable.
- No de-bond become part of concrete.

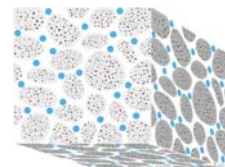
### ACTIVE CRACK SEALING ACTION

As water finds its way into the cracks, the crystalline reaction is activated, forming crystal gel matrix within the crack which seals it and prevents further flow of water. This action will activate during life of concrete structure or deteriorate of concrete chemistry.

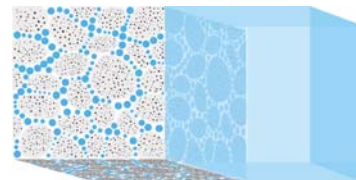


Picture shown the picture of concrete matrix structure

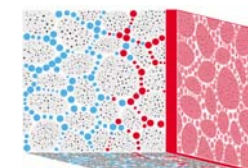
### HOW IT WORK



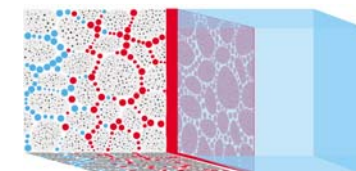
Normal concrete has void and capillaries. It absorbs water.



When concrete subject to water or pressurized water. The water will flow into void and capillaries.



Apply **Rockmax HSC**. The chemical in HSC reactions with cement matrix and become part of concrete and 100% protection.



Permanent waterproofing system and life time activation.

### TECHNICAL PROPERTIES

Color:	clear
Form:	liquid
pH:	10 - 11
Seal crack:	up to 2mm
Touch dry(30 °C):	2 - 4 hours
Full cure:	7 days
Application Temperature:	+5°C to +45°C
Can use on portable water:	Yes
Permanent seal:	Yes
Coverage rate:	4 - 5m <sup>2</sup> /litre

# ROCKMAX<sup>®</sup> HSC

## WATER BASED CRYSTALLIZATION WATERPROOF



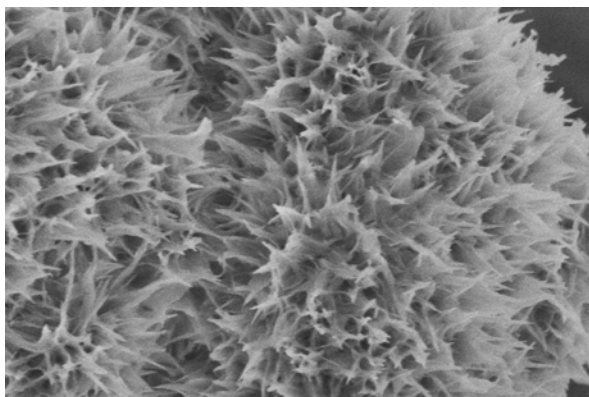
### PREPARATION

Concrete substrate must be sound, clean, free from oil, grease, mould oil, dust, loose particles and cement paste. Ensure the surface is dry and free from standing water. Concrete must be at least 4 weeks old. All damaged concrete surface must be repair by high quality modified concrete repair mortar prior to application. Construction joints, Expansion joints, Penetrations, Floor drain, Floor cover, Corner joints must be seal and treat with waterproofing material such as waterstop, waterproofing self adhesive tape and/or sealants. The waterproofing detail will be available upon request to Rockmax.



### APPLICATION

- Apply **Rockmax HSC** by spray or roller at coverage rate at 4-5m<sup>2</sup>/litre.
- Do not dilute the product with water or solvents.
- After flooded **Rockmax HSC** to surface area wait until dry approximate 2-4 hours.
- Immediately pour water on surface after product dry.
- Curing by flood water 3 days after application.
- Protection the curing area at least 24 hours prior to traffic.



### CURING

Curing by flood water to application area 3-4 times a days at minimum 3 days.

### CLEANING

Clean all tools and equipments immediately with water. Hard materials can be removed by mechanical means

### LIMITATIONS

- **Rockmax HSC** can not seal live crack or large crack (>2mm).
- **Rockmax HSC** can not seal expansion or construction joints for waterproofing purpose.
- Not active to brick, block, masonry or any porous materials.
- Do not contact with glass.
- The product contain high alkali, Work with care and standard safety protection must be follow. MSDS available upon requested.

### PACKAGING

20L pail.

### STORAGE

Storage in shade and dry condition. Avoid from frost, water, moisture and high temperature.

### SHELF LIFE

12 months if kept follow instruction.

### PRECAUTIONS

Avoid contact with skin and eye. Goggle and glove must be use while application. Clean with plenty of water when contact with and see doctor as quick as possible. MSDS is available upon request.

### CONTACT DETAIL

THAILAND

**Rockmax Company Limited**

T: +66 2 8648658

F: +66 2 4184327

E: [info@rockmax.net](mailto:info@rockmax.net)

W: [www.rockmax.net](http://www.rockmax.net)

### *IMPORTANT NOTE!!*

*The technical information contained herein, while not guaranty, was prepared and approved by technical personnel and is true, accurate to the best of our knowledge. No warranty or guaranty is made regarding performance, stability or other factors beyond our control. Rockmax will welcome to be consultation of our performance and application. This technical datasheet supersedes and issue new edition without prior notice.*